



City Center one

Advertising space portfolio

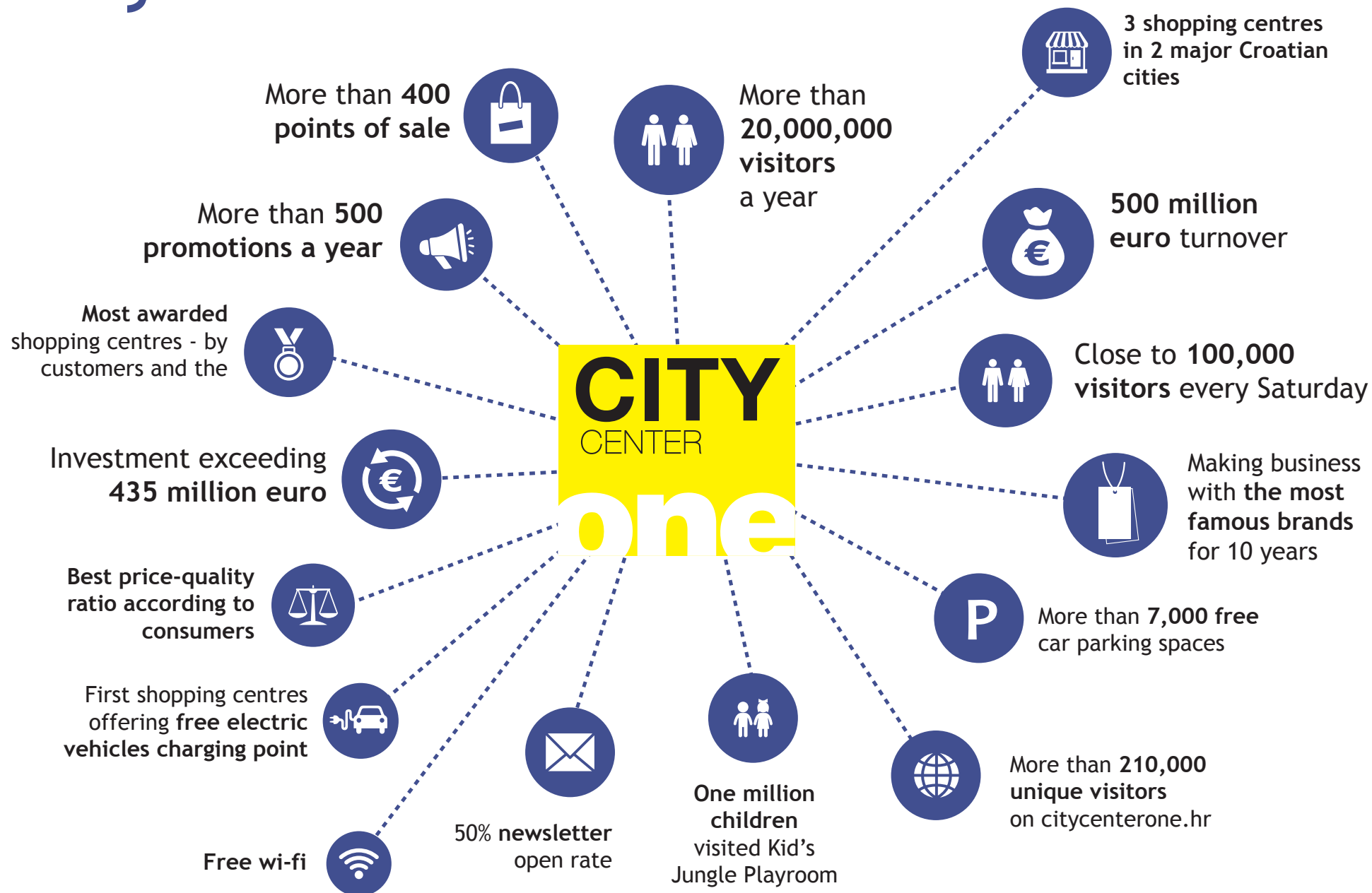




One Brand.
Three Centres.
Thousand
Possibilities.



Why are we first



Customers' first choice in Croatia.

City Center one is a holder of five Best Buy awards for the best price-quality ratio, four Qudal awards for the best quality shopping centre in Croatia and four Superbrand titles for brand excellence awarded by both the industry and the visitors. It is also a holder of Icertias Customers' Friend title as well as Top Service award and Award of Excellence. In addition, City Center one has been recognized as a leading shopping destination in various independent surveys and it takes pride in two international SOLAL marketing awards received by International Council of shopping centers for projects 'Daj 5 za Petrinju bez mina' and 'Yellow Wednesday'.





Our centres are in the focus of attention

1 WEST

2 EAST

3 SPLIT

WEST
Choose ideal
locations to promote
your brand



City Center one Zagreb West

NUMBER ONE FOR 10 YEARS



Advertising space available for lease



GROUND FLOOR



1. FLOOR

*FOR VISUALISATION OF SPACE, PLEASE FOLLOW THE CORRESPONDING NUMBERS ON PAGES 16-20

EAST

Influence the visitor to
buy your product in the
moment of making a
decision about a
purchase



City Center one Zagreb East

SUCCESS STORY IN EAST ZAGREB

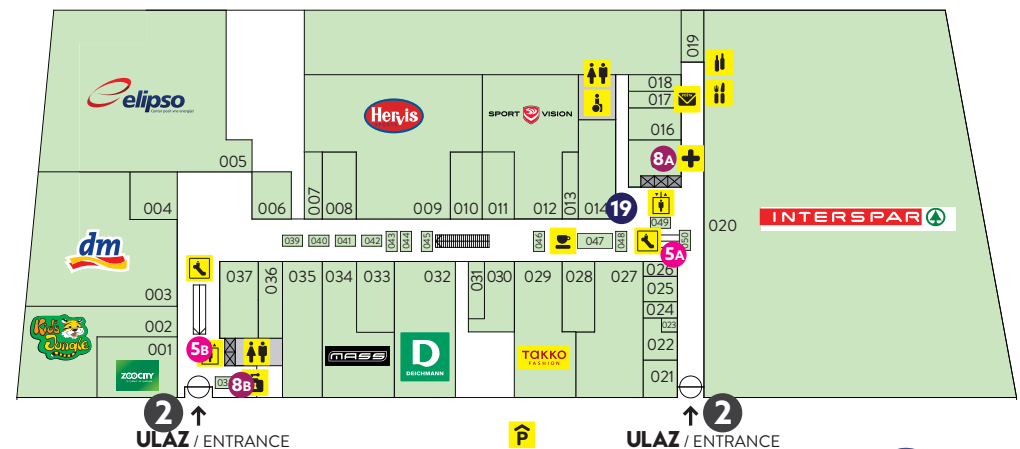


Advertising space
available for lease

1. FLOOR

GROUND FLOOR

-1 LEVEL



*FOR VISUALISATION OF SPACE, PLEASE FOLLOW THE CORRESPONDING NUMBERS ON PAGES 16-20

SPLIT

Make sure we offer
attractive advertising
space options
and achieve great
business results



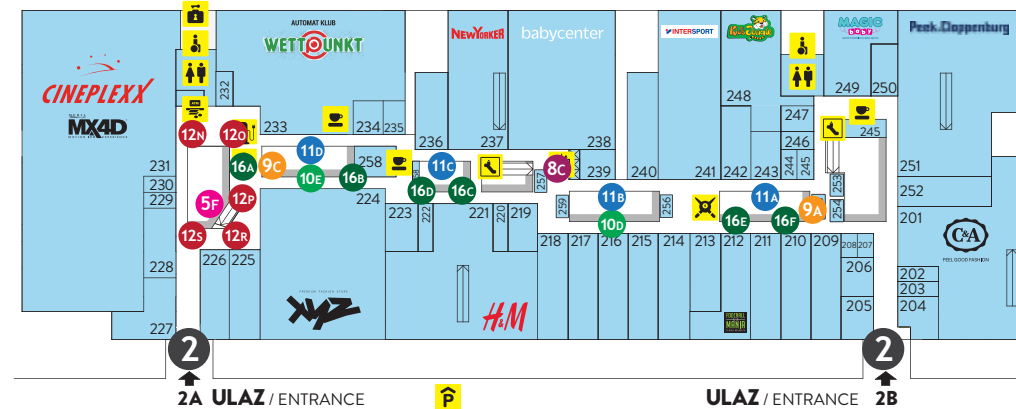
City Center one Split

DALMATIA'S SHOPPING CENTRE

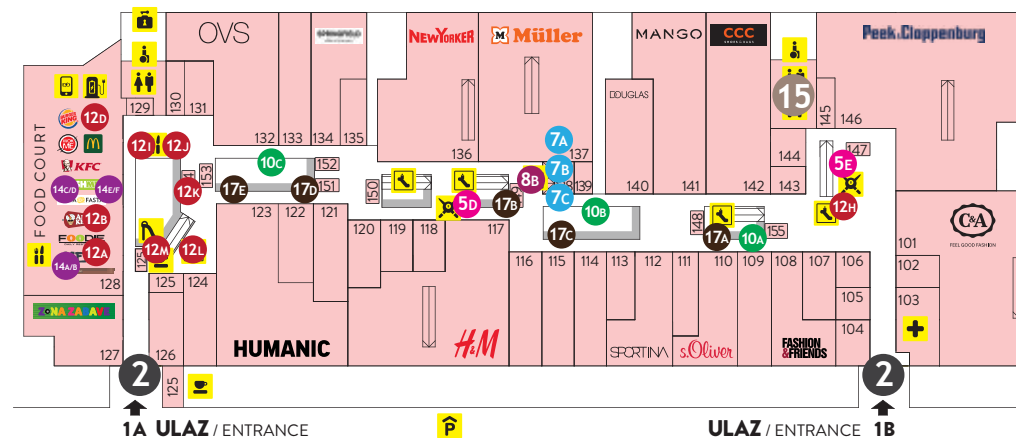


Advertising space
available for lease

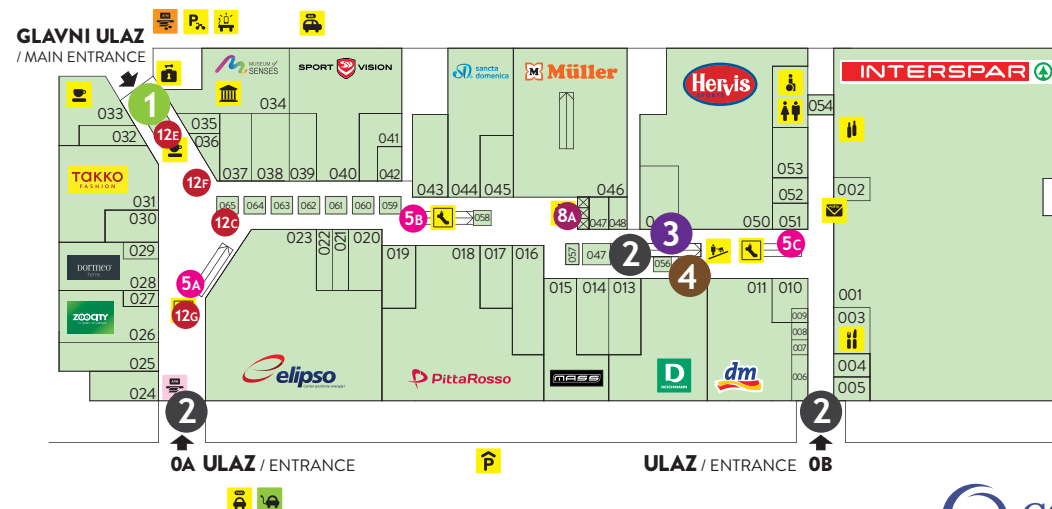
2. FLOOR



1. FLOOR



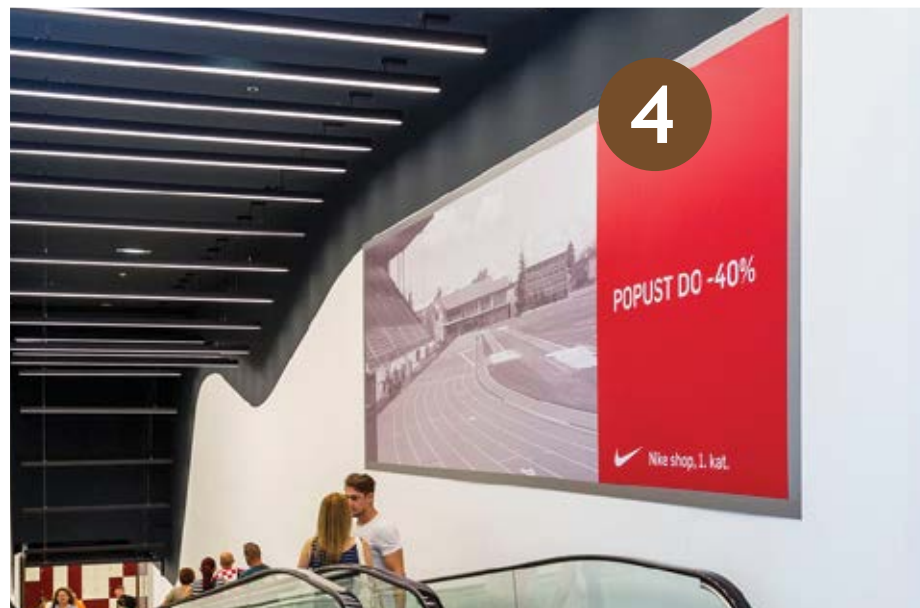
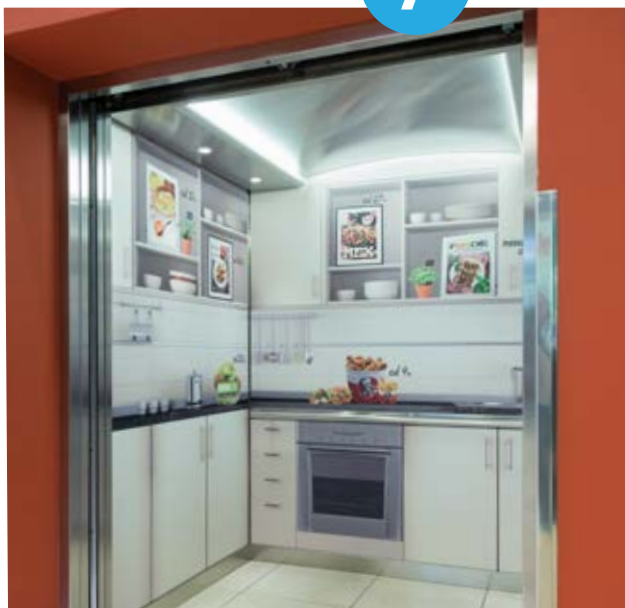
GROUND FLOOR

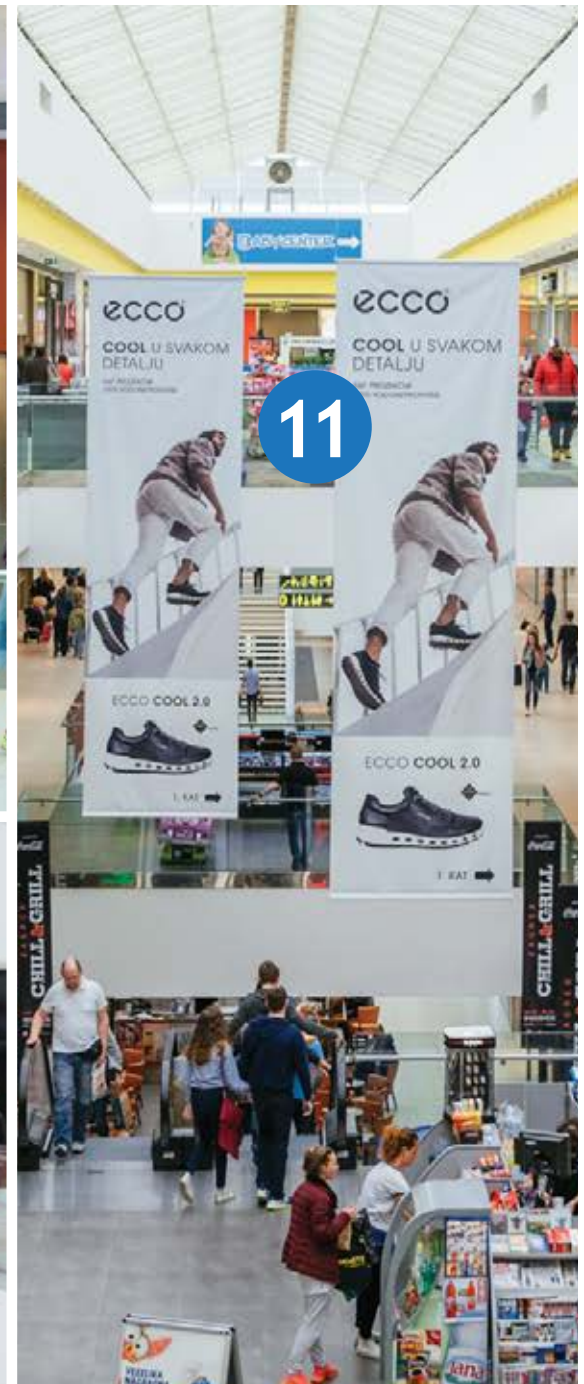


*FOR VISUALISATION OF SPACE, PLEASE FOLLOW THE CORRESPONDING NUMBERS ON PAGES 16-20

Make your brand visible and distinctive











17



18



19



22



21



20

Price list

| | CCo WEST | | CCo EAST | | CCo SPLIT | | |
|---|------------------------------|--|--------------------|--|--------------------|--|--------------------|
| ADVERTISING SPACE LEASE: | number of surfaces for lease | price per unit *VAT is not included | number of surfaces | price per unit *VAT is not included | number of surfaces | price per unit *VAT is not included | floor plan marking |
| centre entrances (except main entrance) - door only | 6* | 18,000.00 kn | 3* | 10,000.00 kn | 7* | 15,000.00 kn | 2 |
| centre main entrance | 1 | 10,000.00 kn | 2* | 16,000.00 kn | 1 | 7,000.00 kn | 1 |
| escalator | 4 | 12,000.00 kn | 4 | 12,000.00 kn | 6 | 12,000.00 kn | 5 |
| moving walkway (travelator) | 1 | 5,000.00 kn | | | 1 | 5,000.00 kn | 3 |
| panoramic lift | 2 | 12,000.00 kn | | | | | 6 |
| lift (outside entrance and inside of the lift) | 2 | 8,000.00 kn | 5 | 8,000.00 kn | 3 | 8,000.00 kn | 7 |
| wall above lifts | 1 (3.5x1m) | 3,000.00 kn | 6 (6.6x1.2m) | 3,000.00 kn | 4 (6.6x1.2m) | 3,000.00 kn | 8 |
| wall above the moving walkway | 1 (6x2m) | 5,000.00 kn | | | 1 | 5,000.00 kn | 4 |
| glass gallery | 5 | 5,000.00 kn | 3 | 5,000.00 kn | 3 | 5,000.00 kn | 9 |
| banners on gallery structure (1 piece) | 6 | 1,000.00 kn | 6 | 1,000.00 kn | 5 | 1,000.00 kn | 10 |
| large hanging banners from the skylight (1 piece) | 3 (2x6m) | 12,000.00 kn | 3 (2x6m; 2x8m) | 12,000.00 kn | 4 (2x8m) | 12,000.00 kn | 11 |
| pillar in the food court / centre | 3/1 | 3,000.00 kn | 3 | 3,000.00 kn | 4/14 | 3,000.00 kn | 12 |
| LED panel in an attractive position in centre | 6 | 1,500.00 kn | | | | | 13 |
| LED panel in an attractive position in food court | 5 | 1,500.00 kn | 5 | 1,500.00 kn | 6 | 1,500.00 kn | 14 |
| LED panel in baby room | 2 | 1,000.00 kn | 1 | 1,000.00 kn | 1 | 1,000.00 kn | 15 |
| gallery wall (larger surfaces) | 1 (3x3m) | 5,000.00 kn | 2 (6x2m) | 5,000.00 kn | 6 (6x2m) | 5,000.00 kn | 16 |
| gallery wall (smaller surfaces) | | | 4 (6x1m) | 5,000.00 kn | 5 (6x1m) | 5,000.00 kn | 17 |
| fixed stairs (treads) | | | 1 to 3 | 11,000.00 kn | | | 18 |
| wall opposite to Spar | | | 1 (3x3m) | 5,000.00 kn | | | 19 |
| moving totem (prepared by Client) | by agreement | 8,500.00 kn | by agreement | 8,500.00 kn | by agreement | 8,500.00 kn | 20 |
| garage (tags - 1 piece) | by agreement | 500.00 kn | by agreement | 500.00 kn | by agreement | 500.00 kn | 21 |
| garage (wall and/or floor stickers - 1 piece) | by agreement | 1,500.00 kn | by agreement | 1,500.00 kn | by agreement | 1,500.00 kn | 22 |

*package lease only

Price list

SPECIAL LEASE CONDITIONS

Simultaneously leasing in:

Two centres 10% discount

Three centres 20% discount

VOLUME DISCOUNT

Lease for the same Client:

For a 3-month period per centre we approve a 10% discount

For a 6-month period per centre we approve a 15% discount

For a 12-month period per centre a special price is formed

IMPORTANT NOTE

- Creative solutions/visualisations need to be submitted for review and approval before the start of advertising campaign
- The tenant agrees on production, mounting and demounting adverts directly with the Contractor and also bears the cost for the work listed and services provided by the Contractor
- The tenant is obliged to obtain any additional permits or assurances in accordance with the Center Rules or Croatian law
- Advertiser is obliged to comply with the House Rules and contractual obligations

OTHER LEASE CONDITIONS

- Payment is made within 10 days for the invoice issued in the current month
- Provider reserves the right to change the prices with timely notification

If you have any further questions, please do not hesitate to contact us.

City Center one West

HELENA KRSTULOVIĆ

Center Manager

Phone: +385 1 5494 062

Cell: +385 98 262 864

E-mail: h.krstulovic@cc-real.com

City Center one East

MARIN ŠIMIĆ

Center Manager

Phone: +385 1 5556 967

Cell: +385 91 4359 018

E-mail: m.simic@cc-real.com

City Center one Split

PJERO RAKELA

Center Manager

Phone: +385 21 510 127

Cell: +385 91 2444 446

E-mail: p.rakela@cc-real.com

About CC Real

An investor in and operator of European commercial real estate assets, CC Real was established in 2006 and today employs more than 150 individuals across 3 countries. It is a performance driven company with dynamic and motivated professionals who have an extensive and diverse real estate experience and relationships. CC Real prides itself with being cornerstone of successful real estate and has demonstrated that by strong and steady growth throughout the last 13 years, both in terms of size and profile.

The company offers a full-service package for direct investment services ranging from identification of opportunities over transaction support to asset and property management. Also, company has experience and great results in co-investment in core assets in Europe with international institutional investors. Looking towards the future, the CC Real team aims to continue its work with existing partners, but to also broaden the scope of its management and investment activities in market segments it views as currently undervalued or underinvested.